

Maxular[®]

A rounded Slab Serif design with a special origin.

Designed by Steven Skaggs

Initial Release (v1.0) · October 23, 2018

NONZERO PIXELS

Optical Coherence

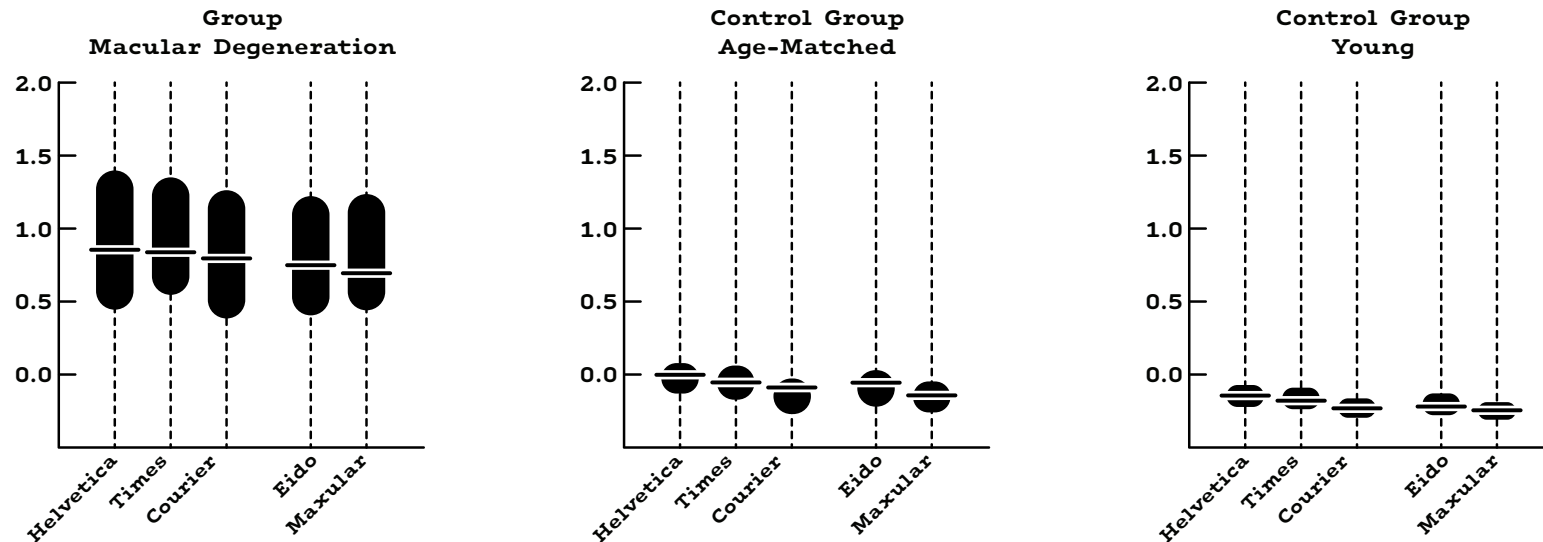
Thoái hóa điểm vàng

Śródbłónka Naczyń

In 2015 Macular Degeneration affected 6.2 million people globally. In 2013 it was the fourth most common cause of blindness after cataracts, preterm birth, and glaucoma.

En 2015, la degeneración macular afectó a 6,2 millones de personas en todo el mundo. En 2013 fue la cuarta causa más común de ceguera después de las cataratas, el parto prematuro y el glaucoma.

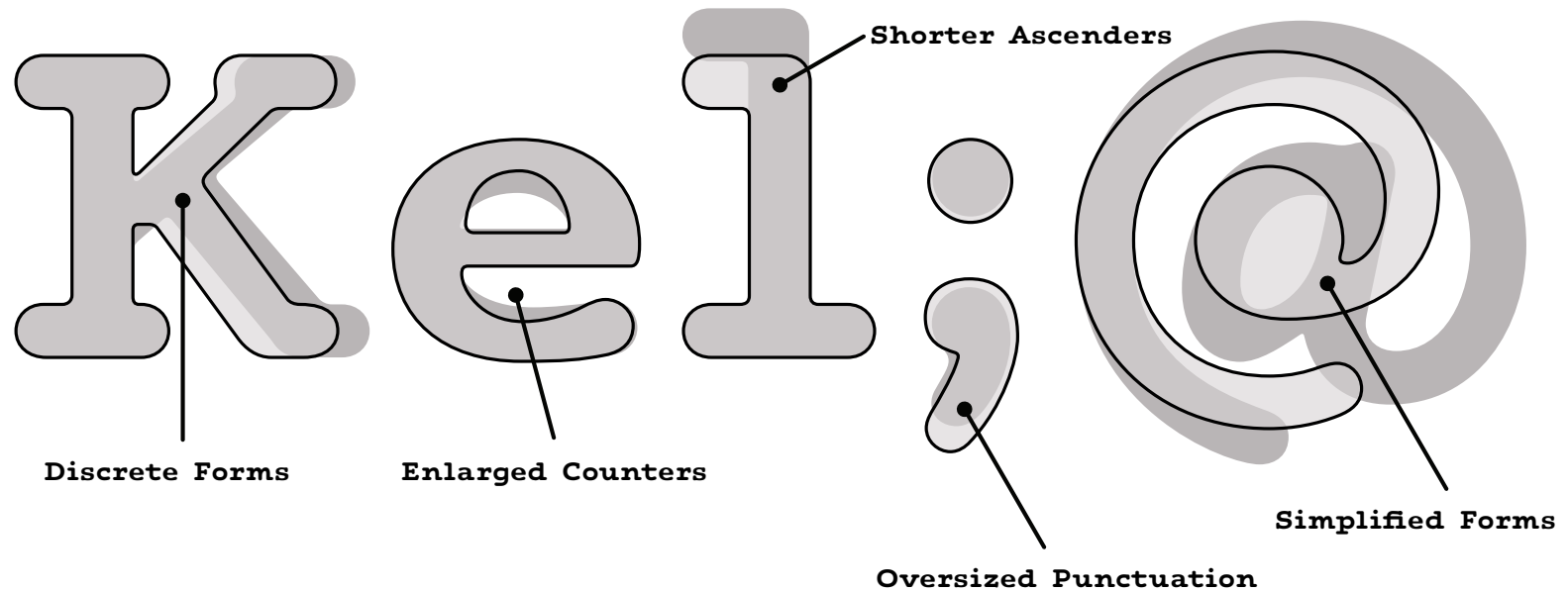
Reading Acuity Test



The Reading Acuity Test (logMAR), in which distributions of Reading Acuity for the five fonts tested among three subject groups: MD (left), age-matched control (middle) and young control (right) groups. Each quantile plot shows the 90th, 75th, 50th (median), 25th, and 10th percentiles.

Source: *Fonts Designed for Macular Degeneration: Impact on Reading*, 2018, Ying-Zi Xiong, Ethan A. Lorsung, John Stephen Mansfield, Charles Bigelow, and Gordon E. Legge.
<https://iovs.arvojournals.org/article.aspx?articleid=2697755>

Form & Feature Comparison



A visual comparison of the overall differences in forms and features between Maxular Rx (in front, outlined) and Maxular for general use (behind, solid gray).

20PT WEIGHT COMPARISON

| | | | |
|------------|--|-------------------|---|
| BOLD | Hamburgefontsiv | BOLD ITALIC | <i>Hamburgefontsiv</i> |
| SEMIBOLD | Hamburgefontsiv | SEMIBOLD ITALIC | <i>Hamburgefontsiv</i> |
| MEDIUM | Hamburgefontsiv | MEDIUM ITALIC | <i>Hamburgefontsiv</i> |
| REGULAR | Hamburgefontsiv | ITALIC | <i>Hamburgefontsiv</i> |
| LIGHT | Hamburgefontsiv | LIGHT ITALIC | <i>Hamburgefontsiv</i> |
| EXTRALIGHT | Hamburgefontsiv | EXTRALIGHT ITALIC | <i>Hamburgefontsiv</i> |
| RX BOLD | Hamburgefontsiv | | |
| RX REGULAR | Hamburgefontsiv | | |

Features

STYLISTIC ALTERNATES

glsxy → *glsxy*

STANDARD & DISCRETIONARY LIGATURES

ffl tt → ffl tt

ARROWS

↑ ↗ → ↘ ↓ ↙ ← ↖

Additional Features Include: Kerning, Case-Sensitive Forms, Localized Forms, Subscript, Superscript, Numerators, Ordinals, Denominators, Scientific Inferiors, and Proportional Figures.

TABULAR FIGURES

12345 → 1|2|3|4|5

FRACTIONS

1/3 5/917 → $\frac{1}{3}$ $\frac{5}{917}$

Story

Six years in the making, Maxular is a rounded slab serif type family by award winning designer, author, and educator Steven Skaggs. Maxular Rx is the first type expressly designed *and proven in scientific tests*¹ to address visual distortions caused by Macular Degeneration (MD), which afflicts over six million people globally. From the beginning, the design of Maxular Rx was informed by a consultant who has moderate MD. Its development was also shaped by months of testing through two independent clinical trials with dozens of MD subjects and normal sighted subjects participating in the scientific tests.

Unlike most general low-vision fonts, Maxular Rx has serifs. Studies have shown that under the particular distortions of MD, serifs aid in separating one letter from another while reinforcing the reading line. The terminals of strokes and serifs are rounded to avoid angular distortion effects. Likewise, joins in the typeface have been rounded to inhibit distortion flares. Testing revealed more conventional alphabetical forms performed consistently superior compared to unconventional shapes. As a result, Maxular Rx uses conventional forms to keep the reading speed and comfort level high, even at small sizes.

The letterforms are wider to project clearly into peripheral vision and the lowercase has a very large x-height. Inter-letter and word spacing is more open to assure the glyphs are distinctly discriminated. Greater line spacing is built-in to prevent overcrowding in the vertical dimension.

Of course, we didn't stop at just the two Maxular Rx versions. Understanding that some of the special features employed in Maxular Rx could be distracting for normal-sighted readers, Skaggs re-drew many glyphs and created true italics for the six Maxular (non-Rx) versions, intended for more general use. Every font in the Maxular family has a repertoire of over 700 glyphs supporting 222 languages. It also features a useful set of arrows and a handful of fun alternate glyphs in the italics.

Designer: Steven Skaggs

Production: Dave Bailey, Delve Withrington

Direction: Delve Withrington

Special thanks to Kieth Kleespies for his input and support

Maxular has 14 styles: ExtraLight, ExtraLight Italic, Light, Light Italic, Regular, Italic, Medium, Medium Italic, SemiBold, Semi-Bold Italic, Bold, Bold Italic, Maxular Rx Regular, and Bold

Formats Available: OpenType (OTF), Truetype (TTF), and Web-fonts (WOFF, WOFF2)

Licenses for Desktop, Webfonts, and Mobile App Fonts are available for purchase at [DelveFonts.com](https://delvefonts.com). Contact Delve Fonts for additional licensing options such as: ePubs, OEM, Broadcast.

¹ *Fonts Designed for Macular Degeneration: Impact on Reading*, 2018, Ying-Zi Xiong, Ethan A. Lorsche, John Stephen Mansfield, Charles Bigelow, and Gordon E. Legge – <https://iovs.arvojournals.org/article.aspx?articleid=2697755>

12PT BOLD

An important idea in the definition of a university is the notion of academic freedom. The first evidence of this comes early in the life of the first university. The University of Bologna adopted an academic charter, Constitutio Habita, in 1158, which

12PT SEMIBOLD

An important idea in the definition of a university is the notion of academic freedom. The first evidence of this comes early in the life of the first university. The University of Bologna adopted an academic charter, Constitutio Habita, in 1158, which

12PT MEDIUM

An important idea in the definition of a university is the notion of academic freedom. The first evidence of this comes early in the life of the first university. The University of Bologna adopted an academic charter, Constitutio Habita, in 1158, which

12PT BOLD ITALIC

An important idea in the definition of a university is the notion of academic freedom. The first evidence of this comes early in the life of the first university. The University of Bologna adopted an academic charter, Constitutio Habita, in 1158, which guaranteed the right of a traveling

12PT SEMIBOLD ITALIC

An important idea in the definition of a university is the notion of academic freedom. The first evidence of this comes early in the life of the first university. The University of Bologna adopted an academic charter, Constitutio Habita, in 1158, which guaranteed the right of a traveling scholar to

12PT MEDIUM ITALIC

An important idea in the definition of a university is the notion of academic freedom. The first evidence of this comes early in the life of the first university. The University of Bologna adopted an academic charter, Constitutio Habita, in 1158, which guaranteed the right of a traveling scholar to

12PT REGULAR

An important idea in the definition of a university is the notion of academic freedom. The first evidence of this comes early in the life of the first university. The University of Bologna adopted an academic charter, Constitutio Habita, in 1158, which guaranteed the right of a traveling

12PT ITALIC

An important idea in the definition of a university is the notion of academic freedom. The first evidence of this comes early in the life of the first university. The University of Bologna adopted an academic charter, Constitutio Habita, in 1158, which guaranteed the right of a traveling scholar to

12PT LIGHT

An important idea in the definition of a university is the notion of academic freedom. The first evidence of this comes early in the life of the first university. The University of Bologna adopted an academic charter, Constitutio Habita, in 1158, which guaranteed the right of a traveling

12PT LIGHT ITALIC

An important idea in the definition of a university is the notion of academic freedom. The first evidence of this comes early in the life of the first university. The University of Bologna adopted an academic charter, Constitutio Habita, in 1158, which guaranteed the right of a traveling scholar to

12PT EXTRALIGHT

An important idea in the definition of a university is the notion of academic freedom. The first evidence of this comes early in the life of the first university. The University of Bologna adopted an academic charter, Constitutio Habita, in 1158, which guaranteed the right of a traveling

12PT EXTRALIGHT ITALIC

An important idea in the definition of a university is the notion of academic freedom. The first evidence of this comes early in the life of the first university. The University of Bologna adopted an academic charter, Constitutio Habita, in 1158, which guaranteed the right of a traveling scholar to

12PT MAXULAR RX BOLD

An important idea in the definition of a university is the notion of academic freedom. The first evidence of this comes early in the life of the first university. The University of Bologna adopted an academic charter, Constitutio

12PT MAXULAR RX REGULAR

An important idea in the definition of a university is the notion of academic freedom. The first evidence of this comes early in the life of the first university. The University of Bologna adopted an academic charter, Constitutio Habita, in 1158, which

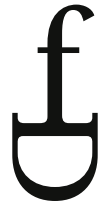
Language Support

Maxular supports the following 222 languages:

Abenaki, Afaan Oromo, Afar, Afrikaans, Albanian, Alsatian, Amis, Anuta, Aragonese, Aranese, Aromanian, Arrernte, Arvanitic, Asturian, Atayal, Aymara, Azerbaijani, Bashkir, Basque, Belarusian, Bemba, Bikol, Bislama, Bosnian, Breton, Bulgarian Romanization, Cape Verdean, Catalan, Cebuano, Chamorro, Chavacano, Chichewa, Chickasaw, Chinese Pinyin, Cimbrian, Cofan, Cornish, Corsican, Creek, Crimean Tatar, Croatian, Czech, Danish, Dawan, Delaware, Dholuo, Drehu, Dutch, English, Esperanto, Estonian, Faroese, Fijian, Filipino, Finnish, Folkspraak, French, Frisian, Friulian, Gagauz, Galician, Ganda, Genoese, German, Gikuyu, Gooniyandi, Greenlandic, Greenlandic Old Orthography, Guadeloupean, Gwichin, Haitian Creole, Han, Hawaiian, Hiligaynon, Hopi, Hotcak, Hungarian, Icelandic, Ido, Igbo, Ilocano, Indonesian, Interglossa, Interlingua, Irish, Istroromanian, Italian, Jamaican, Javanese, Jerriais, Kaingang, Kala Lagaw Ya, Kapampangan, Kaqchikel, Karakalpak, Karelian, Kashubian, Kikongo, Kinyarwanda, Kiribati, Kirundi, Klingon, Kurdish, Ladin, Latin, Latino Sine, Latvian, Lithuanian, Lojban, Lombard, Low Saxon, Luxembourgish, Maasai, Makhuwa, Malay, Maltese, Manx, Maori, Marquesan, Meglenoromanian, Meriam Mir, Mirandese, Mohawk, Moldovan, Montagnais, Montenegrin, Murrinhpatha, Nagamese Creole, Nahuatl, Ndebele, Neapolitan, Ngiyambaa, Niuean, Noongar, Norwegian, Novial,

Occidental, Occitan, Old Icelandic, Old Norse, Oshiwambo, Ossetian, Palauan, Papiamentu, Piedmontese, Polish, Portuguese, Potawatomi, Qeqchi, Quechua, Rarotongan, Romanian, Romansh, Rotokas, Sami Inari, Sami Lule, Sami Northern, Sami Southern, Samoan, Sango, Saramaccan, Sardinian, Scottish Gaelic, Serbian, Seri, Seychellois, Shawnee, Shona, Sicilian, Silesian, Slovak, Slovenian, Slovio, Somali, Sorbian Lower, Sorbian Upper, Sotho Northern, Sotho Southern, Spanish, Sranan, Sundanese, Swahili, Swazi, Swedish, Tagalog, Tahitian, Tetum, Tok Pisin, Tokelauan, Tongan, Tshiluba, Tsonga, Tswana, Tumbuka, Turkish, Turkmen, Tuvaluan, Tzotzil, Uzbek, Venetian, Vepsian, Vietnamese, Volapuk, Voro, Wallisian, Walloon, Waray-waray, Warlpiri, Wayuu, Welsh, Wikmungkan, Wiradjuri, Wolof, Xavante, Xhosa, Yapese, Yindjibarndi, Zapotec, Zarma, Zazaki, Zulu, Zuni

MAXULAR



DELVE FONTS

EMAIL:

support@delfefonts.com

PHONE:

1.510.883.3358

MAILING ADDRESS:

Delve Fonts LLC
2717 Santa Clara Ave.
Alameda, CA 94501

Maxular, Tome, and Delve Fonts are trademarks of Delve Fonts LLC.
All other trademarks or copyrights mentioned are the property of
their respective owners.

Copyright © 2021, Delve Fonts LLC. All Rights Reserved.

MAXULAR